



*Where Learning Adventures Begin...*

**NESTON PRIMARY SCHOOL  
NEWSLETTER**

**9<sup>th</sup> June 2023**

**Issue N<sup>o</sup> 18**

Dear Parents / Carers

I hope you enjoyed the half term break and created some wonderful memories with your children.

**fRundraiser**

A huge thank you to those who took part in the fRundraiser. You helped to raise over £500 which we will be able to put towards computing equipment. This will enhance our children's learning experience enormously. Thank you to FoNS for organising this event and if you haven't seen the promotional film please take a peep at the FoNS face book page:- [FoNS Facebook](#)

Below are the scores:

- 1st Phoenix (1466km)
- 2nd Aquila (1131km)
- 3rd Ursa (1056km)
- 4th Delphinus (952km)
- 5th Lupus (328 km)

**Balbir Nirwan**

On Monday, Balbir Kirwan visited our school and led an assembly and some workshops for the children. Balbir is a practising Sikh and discussed her faith and its origins with the children. She brought along musical instruments and other artefacts which are used during ceremonies. The children asked some very insightful questions and made pertinent links to other religions which they are studying.

**Vision and Values**

Since the end of July last year, we have been working on re-developing our school vision and values. Our previous vision stated that Neston was a place where learning adventures begin. We discussed and grappled with this as it soon became very clear that learning happens well before children come to school. Personalities, attitudes, likes and interests all begin to form from an early age, and this time is as crucial in a child's development.

If you haven't had chance, please read the letter which went out at the beginning of the week which documents our collective thinking regarding our vision and values. This compliments the Neston Promise and supports our Behaviour Policy.

Cont'd...../



**Healthy Schools  
WILTSHIRE**



## Creativity, Community, Courage.

*We make a difference for every child, every day.*

*We ensure that our children learn well as part of a strong, creative community, which cares deeply and dares greatly.*

Have a lovely weekend.

With warmest wishes

*P. Evans*

## DATES FOR YOUR DIARY – 2022-2023

JUNE 2023	
DATE	EVENT
Monday 5 <sup>th</sup>	Term 6 Starts
Monday 12 <sup>th</sup>	Oak Workshare 2.45pm
Tuesday 13 <sup>th</sup>	Chestnut Workshare 2.45pm
Tuesday 13 <sup>th</sup>	Class Photos / Year 6 Leavers
Wednesday 14 <sup>th</sup>	Beech Workshare 8.50am
Wednesday 14 <sup>th</sup>	Silver Birch Workshare 2.45pm
Wednesday 14 <sup>th</sup>	Chestnut Braeside Residential
Thursday 15 <sup>th</sup>	Hazel Workshare 8.50am
Thursday 15 <sup>th</sup>	Willow Workshare 2.45pm
Friday 16 <sup>th</sup>	Maple Workshare 8.50am
Thursday 22 <sup>nd</sup>	Parents' Evening
Tuesday 27 <sup>th</sup>	Parents' Evening

JULY 2023	
DATE	EVENT
Thursday 6 <sup>th</sup>	Bristol Aquarium – Oak Class
W/C 10 <sup>th</sup> TBC	Meet The Teacher Sessions
Tuesday 11 <sup>th</sup>	New Class Changeover
Thursday 13 <sup>th</sup>	Warleigh Lodge Farm – Willow Class
<b>Thursday 13<sup>th</sup></b>	<b>Yr 6 Performance</b>
W/C 17 <sup>th</sup> TBC	Meet The Teacher Sessions
Tuesday 18 <sup>th</sup>	Beech Leavers Assembly
<b>Wednesday 19<sup>th</sup></b>	<b>Westonbirt Arboretum – Silver Birch</b>
Monday 24 <sup>th</sup>	TD Day – School closed
Tuesday 25 <sup>th</sup>	TD Day – School closed
Wednesday 26 <sup>th</sup>	Summer Break

September 2023	
DATE	EVENT
Friday 1 <sup>st</sup>	TD Day – School Closed

**New Dates Will Be Added In Red**



### REPORTING ABSENCE

Please could we remind parents of the following procedures for reporting your child absent:-

- If your child is absent from school, please call 01225 810478 and leave a brief explanation on the absence answerphone before 9.10am **–Please phone for every day of absence**
- If you need to notify us that your child will be absent due to an appointment please email the office [admin@neston.wilts.sch.uk](mailto:admin@neston.wilts.sch.uk)
- If you wish to request a leave of absence, please complete and return the relevant form (which can be obtained from the school office or online via <http://nestonprimary.co.uk/useful-links-forms> ) which will then be passed to Mrs Evans for consideration.

**As part of our Safeguarding procedures, we will contact parents of those children who are not present for registration.**



Percentage attendance	What this means for your child
98%	Excellent attendance that will contribute towards excellent learning and progress.
96-97%	Good attendance that will contribute towards good learning and progress.
93-95%	Average attendance & monitored closely
80-92%	Below average attendance that may begin to have an adverse effect on learning and progress. The school will closely monitor the absences and reasons for them. The Educational Welfare Officer may become involved and a school attendance meeting may take place.
Less than 80%	Very poor attendance that will have a negative effect on learning and progress. The Educational Welfare Officer will become involved in supporting the family to improve attendance.



### School Dinners



**Please can we remind you that meals need to be ordered at least one week in advance.**

The **booking deadline is midnight on a Wednesday** and a text is sent out at 6pm on Wednesday every week.

**If you miss the midnight deadline, ParentPay will not allow you to book meals for the following week.** You will still be able to order for subsequent weeks, with the option to book for the whole term, if you wish.

**If you do miss the booking deadline, you will need to provide a home packed lunch for the whole of the following week.**

Our kitchen orders the food and prepares the meals based on the number of dinners booked on a Wednesday. This helps to reduce food wastage and keeps costs down, which is especially important with the current economic climate.

We thank you for your co-operation and understanding.



Please visit our website to view all the before and after school clubs that are on offer

<http://nestonprimary.co.uk/school-clubs>

Please note, in line with our **Safeguarding** and **Child Protection** policies, parents cannot remain on site during their child's club.





# fRUNdraiser

2023

Thank you to the amazing 145 people who supported this event. We have raised over £500 to help buy some coding equipment



**1st Phoenix (1466km)**  
**2nd Aquila (1131km)**  
**3rd Ursa (1056km)**  
**4th Delphinus (952km)**  
**5th Lupus (328 km)**





September 2022							October 2022							November 2022						
M		5	12	19	26		M		3	10	17	24	31	M		7	14	21	28	
Tu		6	13	20	27		Tu		4	11	18	25		Tu	1	8	15	22	29	
W		7	14	21	28		W		5	12	19	26		W	2	9	16	23	30	
Th	1	8	15	22	29		Th		6	13	20	27		Th	3	10	17	24		
F	2	9	16	23	30		F		7	14	21	28		F	4	11	18	25		
Sa	3	10	17	24			Sa	1	8	15	22	29		Sa	5	12	19	26		
Su	4	11	18	25			Su	2	9	16	23	30		Su	6	13	20	27		

December 2022							January 2023							February 2023						
M		5	12	19	26		M		2	9	16	23	30	M		6	13	20	27	
Tu		6	13	20	27		Tu		3	10	17	24	31	Tu		7	14	21	28	
W		7	14	21	28		W		4	11	18	25		W	1	8	15	22		
Th	1	8	15	22	29		Th		5	12	19	26		Th	2	9	16	23		
F	2	9	16	23	30		F		6	13	20	27		F	3	10	17	24		
Sa	3	10	17	24	31		Sa		7	14	21	28		Sa	4	11	18	25		
Su	4	11	18	25			Su	1	8	15	22	29		Su	5	12	19	26		

March 2023							April 2023							May 2023						
M		6	13	20	27		M		3	10	17	24		M	1	8	15	22	29	
Tu		7	14	21	28		Tu		4	11	18	25		Tu	2	9	16	23	30	
W	1	8	15	22	29		W		5	12	19	26		W	3	10	17	24	31	
Th	2	9	16	23	30		Th		6	13	20	27		Th	4	11	18	25		
F	3	10	17	24	31		F		7	14	21	28		F	5	12	19	26		
Sa	4	11	18	25			Sa	1	8	15	22	29		Sa	6	13	20	27		
Su	5	12	19	26			Su	2	9	16	23	30		Su	7	14	21	28		

June 2023							July 2023							August 2023						
M		5	12	19	26		M		3	10	17	24	31	M		7	14	21	28	
Tu		6	13	20	27		Tu		4	11	18	25		Tu	1	8	15	22	29	
W		7	14	21	28		W		5	12	19	26		W	2	9	16	23	30	
Th	1	8	15	22	29		Th		6	13	20	27		Th	3	10	17	24	31	
F	2	9	16	23	30		F		7	14	21	28		F	4	11	18	25		
Sa	3	10	17	24			Sa	1	8	15	22	29		Sa	5	12	19	26		
Su	4	11	18	25			Su	2	9	16	23	30		Su	6	13	20	27		

## Bank and Public Holidays 2022/2023

Queen's State Funeral	19 <sup>th</sup> September 2022
Boxing Day Holiday	26 <sup>th</sup> December 2022
Christmas Day Holiday	27 <sup>th</sup> December 2022
New Years Holiday	2 <sup>nd</sup> January 2023
Good Friday	7 <sup>th</sup> April 2023
Easter Monday	10 <sup>th</sup> April 2023
May Day Holiday	1 <sup>st</sup> May 2023
His Majesty's Coronation	8 <sup>th</sup> May 2023
Spring Bank Holiday	29 <sup>th</sup> May 2023
Summer Bank Holiday	28 <sup>th</sup> August 2023

## Term dates summary:

Term 1	35 days
Term 2	35 days
Term 3	29 days
Term 4	30 days
Term 5	29 days
Term 6	37 days
<b>TOTAL</b>	<b>195 Days</b>

## KEY:

	School Holidays
	Bank & Public Holidays
	Inset Days (SCHOOL CLOSED)
	SATS week – Year 6

## Staff Inset Days (SCHOOL CLOSED):

Term 1	1 <sup>st</sup> & 2 <sup>nd</sup> September 2022
Term 3	3 <sup>rd</sup> January 2023
Term 6	24 <sup>th</sup> & 25 <sup>th</sup> July 2023





September 2023							October 2023							November 2023						
M		4	11	18	25		M		2	9	16	23	30	M		6	13	20	27	
Tu		5	12	19	26		Tu		3	10	17	24	31	Tu		7	14	21	28	
W		6	13	20	27		W		4	11	18	25		W	1	8	15	22	29	
Th		7	14	21	28		Th		5	12	19	26		Th	2	9	16	23	30	
F	1	8	15	22	29		F		6	13	20	27		F	3	10	17	24		
Sa	2	9	16	23	30		Sa		7	14	21	28		Sa	4	11	18	25		
Su	3	10	17	24			Su	1	8	15	22	29		Su	5	12	19	26		

December 2023							January 2024							February 2024						
M		4	11	18	25		M	1	8	15	22	29		M		5	12	19	26	
Tu		5	12	19	26		Tu	2	9	16	23	30		Tu		6	13	20	27	
W		6	13	20	27		W	3	10	17	24	31		W		7	14	21	28	
Th		7	14	21	28		Th	4	11	18	25			Th	1	8	15	22	29	
F	1	8	15	22	29		F	5	12	19	26			F	2	9	16	23		
Sa	2	9	16	23	30		Sa	6	13	20	27			Sa	3	10	17	24		
Su	3	10	17	24	31		Su	7	14	21	28			Su	4	11	18	25		

March 2024							April 2024							May 2024						
M		4	11	18	25		M	1	8	15	22	29		M		6	13	20	27	
Tu		5	12	19	26		Tu	2	9	16	23	30		Tu		7	14	21	28	
W		6	13	20	27		W	3	10	17	24			W	1	8	15	22	29	
Th		7	14	21	28		Th	4	11	18	25			Th	2	9	16	23	30	
F	1	8	15	22	29		F	5	12	19	26			F	3	10	17	24	31	
Sa	2	9	16	23	30		Sa	6	13	20	27			Sa	4	11	18	25		
Su	3	10	17	24	31		Su	7	14	21	28			Su	5	12	19	26		

June 2024							July 2024							August 2024						
M		3	10	17	24		M	1	8	15	22	29		M		5	12	19	26	
Tu		4	11	18	25		Tu	2	9	16	23	30		Tu		6	13	20	27	
W		5	12	19	26		W	3	10	17	24	31		W		7	14	21	28	
Th		6	13	20	27		Th	4	11	18	25			Th	1	8	15	22	29	
F		7	14	21	28		F	5	12	19	26			F	2	9	16	23	30	
Sa	1	8	15	22	29		Sa	6	13	20	27			Sa	3	10	17	24	31	
Su	2	9	16	23	30		Su	7	14	21	28			Su	4	11	18	25		

#### Bank and Public Holidays 2023/2024

Christmas Day Holiday	25 <sup>th</sup> December 2023
Boxing Day Holiday	26 <sup>th</sup> December 2023
New Year's Holiday	1 <sup>st</sup> January 2024
Good Friday	29 <sup>th</sup> March 2024
Easter Monday	1 <sup>st</sup> April 2024
May Day Holiday	6 <sup>th</sup> May 2024
Spring Bank Holiday	27 <sup>th</sup> May 2024
Summer Bank Holiday	26 <sup>th</sup> August 2024

#### Term dates summary:

Term 1	34 days
Term 2	38 days
Term 3	27 days
Term 4	29 days
Term 5	29 days
Term 6	38 days
TOTAL	195 Days

#### KEY:

	School Holidays
	Bank & Public Holidays
	Inset Days (SCHOOL CLOSED)
	SATS week – Year 6 – TBC

#### Staff Inset Days (SCHOOL CLOSED):

Term 1	September 1 <sup>st</sup> 2023
Term	TBC
Term	TBC









# SAVE THE DATE

**9th – 11th June 2023**

**Guided Walks**

**Children's Treasure Hunt**

**Mystery Walk**

**Booking from 3 April 2023 at**

**[www.corshamwalkingfestival.org.uk](http://www.corshamwalkingfestival.org.uk)**



Photo courtesy of Julian Carosi

Supported by

**Wiltshire Council**  
Where everybody matters



**Corsham**  
TOWN COUNCIL



**NOW BOOKING - FREE**

**AT POUND ARTS CENTRE**

**Or online at:**

**[www.corshamwalkingfestival.org.uk](http://www.corshamwalkingfestival.org.uk)**

**CHILDREN'S TREASURE HUNT**

**Saturday 10<sup>th</sup> June**



**To encourage children to discover Corsham**

**Follow simple instructions**

**All children will be rewarded with a gift**

**kindly donated by:**



25







**NOW BOOKING - FREE  
AT POUND ARTS CENTRE**

**Or at:**

**[www.corshamwalkingfestival.org.uk](http://www.corshamwalkingfestival.org.uk)**

**Urgent!! Eco-Detectives Needed  
Help Save the Trees of Corsham  
10<sup>th</sup> & 11<sup>th</sup> June**



**A local self-guided walk for teams of 2 – 4  
Can you solve the mystery and find the phial of deadly fungal  
spores hidden by evil Dr Ash Daibach?  
A map and instruction are provided  
Prizes for the highest scoring team  
Prizes kindly donated by:**





# Neston Fête

a traditional  
village  
fete!



Saturday 8 July 2023

12pm - 3pm

-  Bake Off
-  Raffle
-  Barbeque
-  Tea & Cakes
-  Local Trade Stalls
-  Face Painting
-  Produce Competition
-  Entertainment



Neston Memorial Hall  
and Recreation Ground





# Neston Fête Produce Competition

**new!**

for kids:

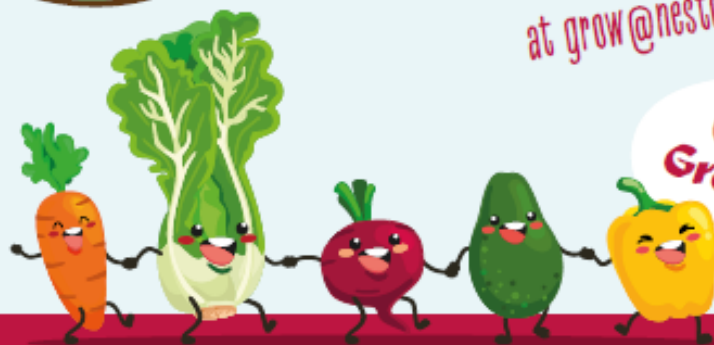
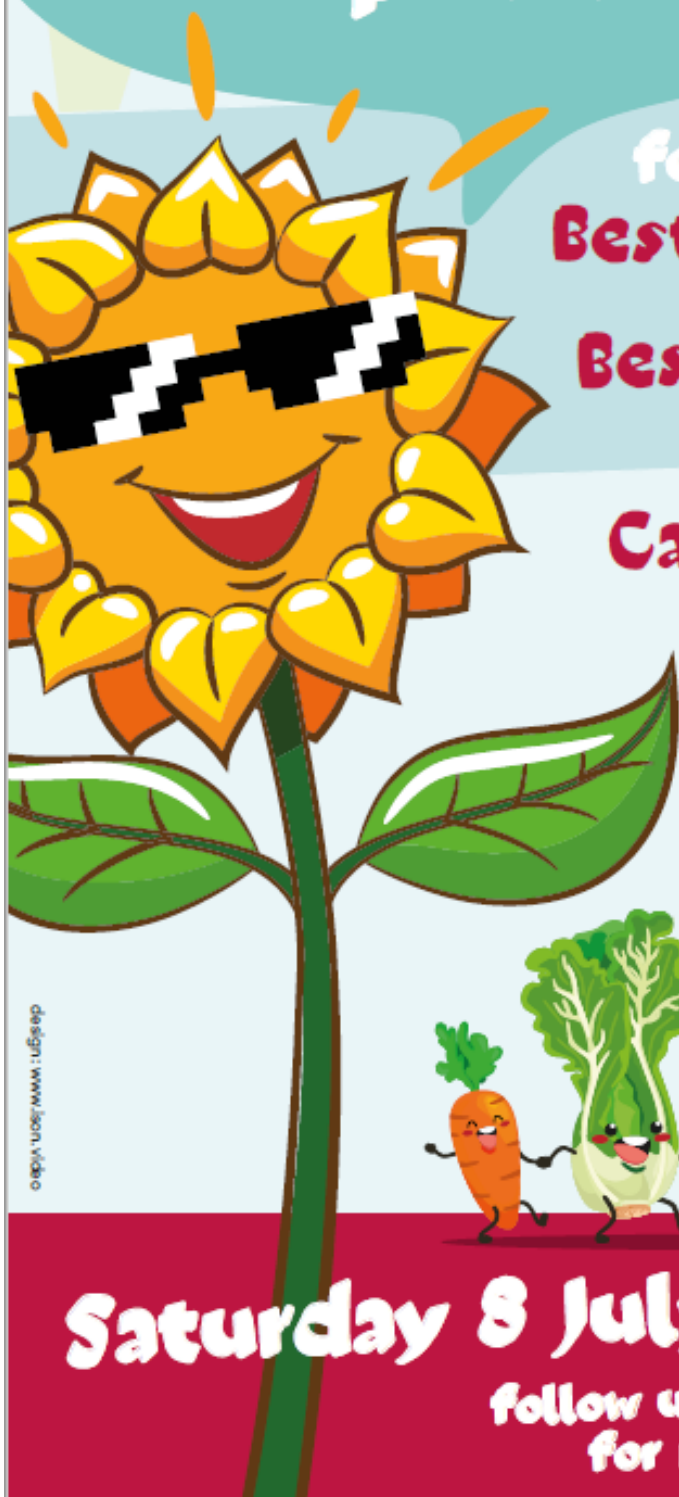
**Best Minature Garden**

**Best Mini-beast** *made from fruit  
or vegetables*

**Carrot** *longest and most unusual looking*

**Radish** *heaviest and most glamorous*

**Tallest Sunflower** *judged by photos sent to us  
at [grow@nestonmemorialhall.co.uk](mailto:grow@nestonmemorialhall.co.uk)*



**Get  
Growing!**

**Saturday 8 July 2023**

**follow us on Facebook  
for news and updates!**





Corsham  
Climate Action  
*for a greener future*



# REPAIR CAFE

Arts  
**Pound**



**Dates for 2023**

10.30AM - 12.30PM

Pound Arts Centre, Pound Pill,  
Corsham

**27th May**

**24th June**

**22nd July**

**23rd Sept**

**28th Oct**

**25th Nov**

**Mechanical**

**Electronics**

**Electrical**

**Sewing**

**General**



**@ShareRepairBath**

Email: [hello@shareandrepair.org.uk](mailto:hello@shareandrepair.org.uk)

#MendItDontEndIt

Charity Number 1189015



**MEND It**

DON'T

**END It**

**FOR MORE INFORMATION VISIT [WWW.SHAREANDREPAIR.ORG.UK](http://WWW.SHAREANDREPAIR.ORG.UK)**





# Youth Art Competition

## 'The Wonder of the World'



- how the sky is held up
- if the moon is made of cheese
- if I'll ever like Brussels sprouts
- when it will be play time
- who discovered that blue and red make purple
- what my favourite animal's home looks like

Create a picture that represents wonder, the world, your place in it. You can use:

*Painting, Ceramics, Printmaking, Drawing, Textiles, Mixed Media, Mosaics, Sculpture and Digital Art/Photography.*

The deadline is **Friday 21 July 2023.**

The competition is open to everyone 18 and under and will be judged, and the winners notified, by early in the new academic year.

Winners will be chosen from the following age groups:

6 years and under, 7-10 years, 11-14 years and 15-18 years

The winning pictures will be exhibited at the Town Hall during the Peacock Arts Trail .

All participants are asked to post their artwork for judging, if it is flat, or email an image of it, if it is three-dimensional, to [sleigh@corsham.gov.uk](mailto:sleigh@corsham.gov.uk).



Any questions, contact Sarah Leigh on 01249 702138.

Corsham Town Council, Town Hall, High Street, Corsham, Wiltshire SN13 0EZ



At Neston school we are committed to keeping our young people safe online. We teach online safety as part of our computing curriculum and support our children to learn how to stay safe from different risks online and where they can go to get help and advice.

We want all the children at Neston school to feel confident that they can stay safe online. If you need any further support with issues relating to online safety then please speak to a member of staff. You can also check out our online safety page on the school website <http://nestonprimary.co.uk/e-safety> which contains up to date information and links to further online safety resources.



### **MEDICATION IN SCHOOL**

Please can we remind parents that if your child requires medication during school hours, that a form is completed and returned to the school office, along with any medicines that are clearly named.

Children should not have medicine in their school bags and self-administer. This can include creams, calpol, ibuprofen, hayfever tablets etc.

If you need to complete a form, these can be collected from the school office or downloaded from our website via - <http://nestonprimary.co.uk/useful-links-forms>

If you have any queries regarding the above, please contact the school office on [admin@neston.wilts.sch.uk](mailto:admin@neston.wilts.sch.uk)

We thank you for your support in this matter.





### FoNS – Who We Are

Friends of Neston School (FoNS) formed in 1998 and registered as a charity in 2001 with the purpose to advance the education of the pupils at Neston School with two main aims:

- Developing effective relationships between the staff, parents and others associated with the school
- Engaging in activities or providing facilities or equipment which support the School and advance the education of the pupils

We are always seeking ways to improve and evolve as your children progress through the school. We welcome any new ideas and suggestions for events. To be a part of this great team please contact FoNS Chair, Harriet Thaneja [harriet@friendsofnestonschool.org.uk](mailto:harriet@friendsofnestonschool.org.uk)

**facebook**

Did you know that FoNS have their own Facebook page?

<https://www.facebook.com/Friends-of-Neston-School-711133625923126/>

Follow us for our school fundraising activities!

Dates and events will be added to the Newsletter once a they have been finalised.



### MUSIC LESSONS

Did you know we have some amazing music teachers who offer private music tuition in piano, guitar and drumming?

Please visit our webpage for further details

<http://nestonprimary.co.uk/parents>



© dak







Please can we remind parents that dogs are not allowed on the school premises. We'd be grateful if they could be kept back from the school gate too. Thank you



Please can we ask that you are considerate of our neighbours and cautious where you park at drop off and pick up times. This includes leaving the bus stop free for the school bus and not blocking the entrance to the school car park, as this is required at all times.

Please also be mindful that cars leaving the car park cannot always see out onto the road clearly.

We have had complaints by local residents of driveways being blocked.

We thank you for your continued support in this matter.



Please see details below of when each class has their PE days.

**Children should come to school in their PE kit.**

Willow – Tuesday  
 Oak – Monday & Wednesday  
 Silver Birch – Wednesday & Friday  
 Hazel – Monday & Thursday  
 Chestnut – Monday & Thursday  
 Maple – Tuesday & Friday  
 Beech – Tuesday & Friday



<b>8.30am</b>	School Office Opens
<b>8.45am</b>	School Gates Unlocked
<b>8.50am</b>	Our school day starts. Children will be welcomed into class where an activity will be waiting for them.
<b>9.00am</b>	Registration
<b>9.10am</b>	Registration Closes / School Gates Locked
<b>10.15am</b>	KS1 Break / Snack Time
<b>10.30am</b>	KS2 Break / Snack Time
<b>12.15 – 1.15pm</b>	Lunchtime
<b>3.15pm</b>	School Gates Unlocked
<b>3.15pm</b>	Home Time
<b>3.30pm</b>	School Gates Locked & School Office Closes